

Multi Factor Authentication (MFA) is required for all staff when logging in with Yavneh Microsoft 365 accounts outside of the school network. This is to help protect against the risk of cyberattacks where an attacker obtains a user's password commonly via a phishing email. MFA adds a second layer of verification from another device which an attacker would not have access to.

You will not be prompted for MFA on school computers/laptops or devices connected to the school Wi-Fi.

Setup Instructions

IMPORTANT: Please follow the setup instructions from a computer/laptop.

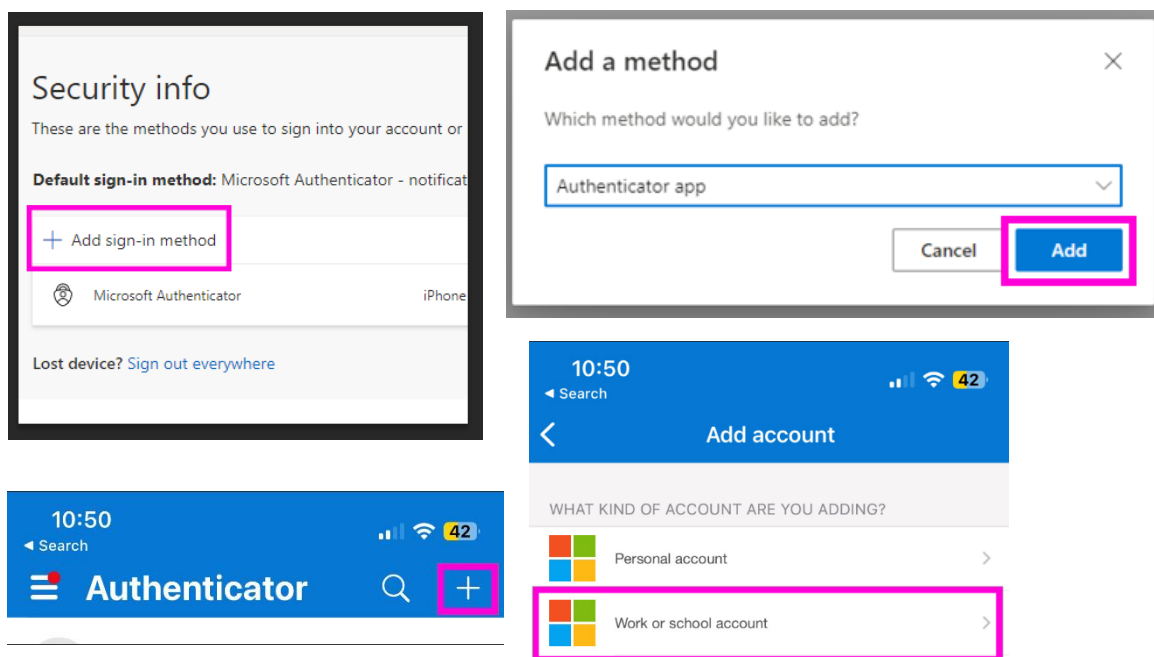
Please click on the link below on a computer/laptop:

<https://mysignins.microsoft.com/security-info>

Choose 'Add a sign-in method' → 'Authenticator app' → 'Add' and follow the setup instructions on screen to setup Microsoft Authenticator on your phone scanning the QR code when prompted.

Make sure to complete the 'Lets try it out' process so a test notification is sent to your phone.

If you do not want to use the Microsoft Authenticator app you can choose Mobile text message verification instead as part of the setup process.



If you have not setup a verification method for MFA – Microsoft will force you to complete the process above setup when logging in outside of the school network (e.g. logging into Office 365/Webmail with your Yavneh login on a personal laptop/computer)

Further information on setting up Microsoft Authenticator can be found on Microsoft's help page [here](#) and for text message verification [here](#).

If you are struggling, please see Network Support.